

CountryViews



THE NEWSLETTER OF THE COUNTRYSIDE CONSERVANCY



Messimer Preserve Dedicated

In the Fall 2005 issue of *CountryViews*, we reported that the Conservancy had acquired 45 acres of creek-side lands at the northeast edge of the Lackawanna State Park. Conservation of this land will protect habitat and water quality on the South Branch of the Tunkhannock Creek, which is the largest tributary to the Park's Lackawanna Lake. Nathaniel Messimer made this property available to the Conservancy via a bargain sale in order to protect it permanently from development.

In early June, we invited Nathaniel to join us for the formal dedication of this property as a Conservancy preserve. Several dozen friends of the Conservancy and the Messimer family turned up on the creek

banks for the dedication, protected by a thick canopy of hemlocks from the fine mist falling all around. Conservancy President Margaret Hull offered a brief expression of thanks to Nathaniel, who responded with a poem that he had composed for the occasion. Its humorous yet feeling tone struck a chord with those listening under the trees.

This new preserve is open from dawn to dusk for recreational and educational use. We hope to host wildflower walks here next spring. Visitors are asked to respect the rules posted at the creekside trailhead, including the prohibition on recreational motorized vehicles.

The preserve lies at the end of Grist Mill Road, off of PA Route 524 about 2 miles west of I-81 Exit 199 (Scott). Grist Mill Road is closed to cars partway down its length, but is accessible on foot far into the property.

Stopping by the Messimer Woods on a Summer Morning

(with a touch of Frost)
by Nathaniel Messimer

These woods, I think, I used to know,
but that was many years ago
When, in spring, I'd ramble here
as soon as they were free of snow,
And search for flowers that each year
miraculously re-appear:
Trillium, May-apple and Jo-pye;
The joy of being startled by
Cardinal flowers, and did I mention
September's bluest bottle-gentian?

These woods which lie away from the house
were sure to yield a startled grouse,
and since I left here, young and perky,
There's news of the return of turkey!

These woods and their accompanying stream
can harbor anybody's dream
as they did mine and those before —
(Those two-legged and those four).

And now's the time to start new dreams
and cherish both the woods and stream;
These woods, so lovely, dark and deep,
Present new promises to keep,
and miles of water to safely keep.

Tailgate Picnic Coming!

Please join us for the 2006 Tailgate Picnic on Sunday, September 24! This year's Picnic will be held at Meadowsweet Preserve on Lily Lake Road, Dalton (see page 3 for details).

This year the Tailgate Picnic is free to Conservancy members. (Non-members can join at the Picnic for a special reduced rate.) Enjoy the live band, horse-drawn wagon rides, corn roast, and activities for the kids. Hope to see you there!



2006 Auction a Record-Breaker

Saturday, the fifteenth of July dawned ominously cloudy. Auction volunteers and Conservancy staff members turned grave faces to the sky as morning showers fell, and an additional tent was hurriedly ordered. But all through the vagaries of the morning's weather and the controlled chaos of event set-up, Auction chairs Malcolm and Ann MacGregor remained cool, calm and smiling.



Malcolm MacGregor is prepared for any eventuality - including mosquitos!

And cool and calm they stayed, right through to the midnight take-down of an event that enters the records as our biggest and most successful Auction ever! Over 200 guests were in attendance, their spirits undimmed by a brief downpour just as the event officially kicked off. The weather behaved itself thereafter, and all in attendance had a lovely evening with dinner, cocktails, cool music, and frenzied bidding on the green at Keystone College. College President Ned Boehm and his wife Regina were cordial hosts as always, and the food and entertainment were first-class!

The solid work of this year's Auction Committee was central to the event's success. Led by Ann and Malcolm, Committee members Karen Barren, Regina Boehm, Amy Broadbent, Nancy Brown, Mari Byron, Ellen Burkey, Margi Cowley, Tricia Cummings, Meg Dempsey, Penny Davis, Chrissy Gilhooley, Eleanore and George Ginader, Kathleen Graff, Mary

Gromelski, Lisa Hall, Liz Horchos, Erin Kane, Amy Kazmierski, Kristie McMahon, Polly Metzger, Carol Nelson Dembert, Elaine Shepard, Maureen Walker, and Wendy Wilson were invaluable with their creative thinking, donor connections, and hard work throughout the planning and the event itself. Vi Kelly and Ali Breig were among those who provided additional support and assistance. We are immensely grateful for their good work!

This year we were treated once again to the professional patter of auctioneer Ken Rivenburg, with the terrible twosome of Phil and Curt Stevens serving as Masters of Ceremonies. Raisa Statuto created stunning floral arrangements for the tables, and our cover art was provided by photographer Kathryn LeSoine. Bill Booth designed and printed handsome posters to promote the event. Nancy Bill, Jamie Constantine and friend Nicky lent capable hands at the check-in desk, while Eric Davis and Teresa Muto of Ginader Jones, assisted by Conservancy staffer Cheryl Ellsworth, ran a smooth check-out table. Thanks also to the rest of the Ginader Jones staff for their great back-office support of this event!

We extend our sincere thanks to host sponsor Keystone College (especially to Ned and Regina Boehm, Allyson Edwards, and Rico Ortiz) for putting on a seamless event; and to media sponsor Adelpia, which created and generously aired a beautiful TV spot. Thanks also to our financial sponsors: (Sanctuary Society level) Marworth, and Wright and Reihner PC; (Steward level) Alliance Landfill, the Foley Law Firm, Gentex Corporation, Henkelman Appraisal Company, Mansions and Estates International, Penn Security Bank & Trust Company, and Peoples National Bank; (Protector level) Citigroup SmithBarney, Condron & Company, the Erickson/Greco Group of



Ned and Regina Boehm of Keystone College, Auction co-chair Malcolm MacGregor, Mark DeStefano of Adelpia, Joe Wright and Dave Gromelski of Wright & Reihner PC, and master of ceremonies Curt Stevens gather on the green.

Merrill Lynch, Knowles Associates Insurance, Oliver, Price & Rhodes, and R.J. Walker Co.; and our ad-book sponsors: Advanced Merchant Group, Breig Bros., Inc., Brown Hill Tree Co., Classic Properties, Cresswell Drilling, First Liberty Bank & Trust, the Glider Restaurant, O'Boyle Real Estate, and Butler's Sunoco Service Station.

Finally, we wish to thank the many artists, artisans, crafters and local businesses that generously donated the over 160 items of our silent and live auction! There are simply too many to list. This year's auction selection was unsurpassed for variety, beauty and interest. And we extend our warm thanks to all the patrons and guests who made the event a success. Please plan to join us again next year!



Ann MacGregor and friends at the Auction.

Tailgate Picnic Set for Sept. 24

The Countryside Conservancy will hold its 12th Annual Tailgate Picnic on **Sunday, September 24!** The Picnic will take place at the Conservancy's Meadowsweet Preserve on Lily Lake Road in Abington Township, the same spot as last year's event. The Picnic starts at 2 pm and continues till dusk. We are delighted to have long-time Conservancy supporters Sharon and Jim Vipond serving as this year's Picnic chairs.

The Tailgate Picnic will be free for all Conservancy members, as a small expression of our thanks for your support. Non-members can receive Picnic admission and a discounted one-year membership for a \$15 donation at the gate.

Features of the Picnic include a corn roast and toasted marshmallows courtesy of the Acker family, to round out the contents of your picnic basket. Adults will enjoy the cool sounds of a live band,

and children's activities and games will be offered (possibly including the infamous pie-eating contest!). Another highlight of the Picnic for the young and young-at-heart will be horse-drawn wagon rides, courtesy of Margaret Hull and Spring Hills Farm.

The morning before the Picnic, Conservancy volunteer Joe Tierney is planning to lead a mountain bike ride over trails that he's helped to build from Meadowsweet Preserve to Lackawanna State Park. Riders should meet at the Meadowsweet parking lot on Lily Lake Road at 10:30 am; the ride will start at 11:00. Trail difficulty is intermediate to advanced. Helmets are required, and children should be accompanied by a parent.

The Meadowsweet Preserve is located on Lily Lake Road in Dalton. Take PA Route 407 north for three-quarters of a mile from the intersection of PA Routes 632



(Photo by Susan Scranton Dawson.)

View of Meadowsweet Preserve.

and 407 at the Waverly Community House. Turn left onto Lily Lake Road, and the picnic site is less than half a mile down the road on the right.

Please pack your picnic basket, come out and enjoy the day with us—and bring your family and friends! Call the office at 945-6995 for more information, or to volunteer to help with the event.

Land Protected in Waverly

Peter and Sally Bohlin recently made a very generous gift to the Conservancy: 4.4 acres of land in Waverly, Lackawanna County. This property lies to the south of the Waverly Community House, just behind the Waverly Methodist Church, and only a few hundred feet upstream of a 30-acre conservation easement donated to the Conservancy in 2001. The Bohlins had considered building a house on this parcel, but as they looked at the marsh and the neighborhood, including nearby lands protected by conservation easements, they realized it made more sense to keep it undeveloped.

The land is partly woodland and partly wetland, in the headwaters of Ackerly Creek. Sally describes the property as “a very lovely bit of land near the Comm that we thought would be great for the general public to come in and enjoy.” Lying almost on the doorstep of the

Waverly Community House, it is a beautiful link between the traditional village and the undeveloped lands that surround it. Together with other nearby lands protected by the Conservancy, it will contribute to a protective greenbelt around the Waverly historic district designated in 2004.

Back in 2000, the Bohlins gave the Conservancy a conservation easement on over 8 acres of land next to their home on the north side of Waverly. Peter and Sally felt it was important to conserve that land because of its beauty—it includes a large open field in an area dominated by houses and woods—and because of its nearness to the built-up “downtown” of Waverly. Neighbors had enjoyed the beautiful view for years, and generations of children had grown up playing there. The Bohlins, after they had the opportunity to purchase the property, realized that it was incumbent



(Photo by Susan Scranton Dawson.)

View of the land donated by Peter and Sally Bohlin.

upon them to ensure that it would never be built over. Sally says that working through the easement process with the Conservancy was “quite simple.”

The Countryside Conservancy wishes to express its profound gratitude for the Bohlins' generosity, both of their 2000 easement donation and the gift of land made in February this year. We are honored to work with landowners so committed to conservation.

Stewardship Award Nominations Sought

Once again, letters are going out under the intriguing headline: “Do you like what your neighbor’s doing with his property?” It’s our way of encouraging you to nominate your neighbor (or anybody else) for the Conservancy’s Eleventh Annual Stewardship Awards.

The Stewardship Awards honor individuals, families and organizations who maintain their properties in a manner that respects the conservation values of the land and brings enjoyment to the community. Awards are made in three categories: Working Farm, Residential, and Special Uses. Susan Scranton Dawson of Dalton and Jo-Ellen Greene of Thompson will chair the Stewardship Awards Committee again this year, leading the effort to identify more hidden gems tucked into the hills and valleys of our region.

Owners of properties in the Tunkhannock Creek Watershed and surrounding areas are eligible for consideration, and anyone is welcome to nominate a property for an award. Nomination forms are available by contacting the Conservancy at (570) 945-6995 or at cconserv@epix.net. You are encouraged to submit photos of the nominated property, which may be shown at the awards ceremony!

To give you an idea of the variety of properties that we consider, past winners have included the owners and caretakers of dairy, beef and horse farms, historic and modern homes, a township’s dirt and gravel roads, an organic vegetable garden, two libraries, a public park, a train station restored as a township building, and several art galleries housed in historic buildings. Help us add to the list!

Award nominations should be sent to the Conservancy at PO Box 55, La Plume PA 18440 by September 15, or emailed to cconserv@epix.net. Award winners will be recognized next spring at our Annual Meeting.

Expanded Tax Incentives for Conservation

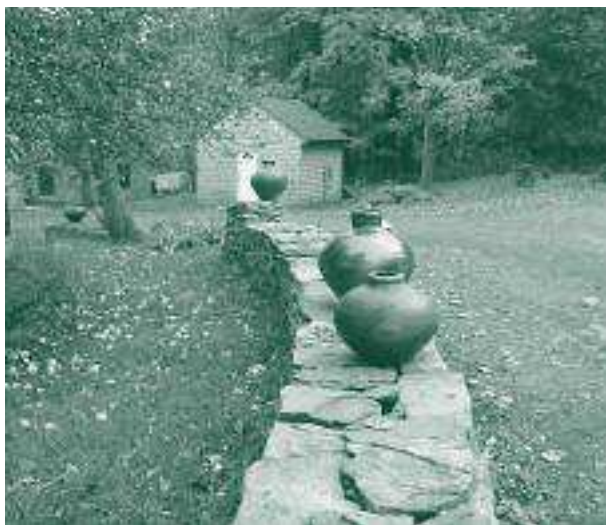
On August 3, the United States Congress approved a significant expansion of the Federal income tax incentive for donation of conservation easements (see page 5: “What is a Conservation Easement?”). President Bush signed it into law on August 17. For landowners who donate a conservation easement on their land, the new law raises the maximum deduction the donor can take from 30% of their adjusted gross income (AGI) in any year to 50%, while qualifying farmers and ranchers may deduct up to 100% of AGI. The law also extends the carry-forward period for a donor to take tax deductions for a donated conservation easement from 5 to 15 years. This could be a major consideration for donors who have limited taxable income but wish to donate a conservation easement that is appraised at a high dollar value; it will give them a chance to take more of the tax deduction.

The underlying tax requirements for easement donations, meanwhile, remain unchanged (section 170(h) of the Internal Revenue Code, for the tax lawyers out there). In order to qualify for a Federal income tax deduction, a conservation easement must be given to a qualifying organization such as the Countryside Conservancy. It must be

voluntary, “no-strings” donation—not made, for example, in exchange for a development permit. Finally, it must meet Federal guidelines on protecting important conservation values. According to these guidelines, the easement must satisfy one of the following conditions: it preserves land for outdoor recreation or education of the general public; it protects relatively natural wildlife habitat or similar ecosystem; it preserves open space for the scenic enjoyment of the public or pursuant to a governmental policy which will yield significant public benefit; or it preserves an historically important land area or a certified historic structure.

This new law applies only to conservation easements donated in 2006 and 2007. If you have been considering donating a conservation easement, you may wish to talk to your financial and legal advisors and see how this new law might benefit you.

As Conservancy board and staff members have heard at countless seminars and from the landowners themselves, easement donors are not motivated primarily by the prospect of a tax break, but rather by their wish to preserve the important values of their land for the future. However, we want landowners to be fully aware of the potential beneficial tax consequences of their actions. For more information on the new tax provisions, call the Conservancy office at (570) 945-6995.



Stony Meadow Pottery in Clifford Township, a 2006 Stewardship Award winner.

Thank You to Our Members!

We wish to welcome all the new and renewing members who have supported our Annual Campaign 2006 since the date of our last newsletter! We thank the following individuals whose contributions are helping to keep the Conservancy healthy and active this year:

Ms. Jeanne Bovard
Ms. Mardy Burgess
Ms. Colleen Carter
Mr. and Mrs. Eugene Cole
Ms. Susan Constantine
Dr. and Mrs. Joseph Cronkey
Dr. and Mrs. Robert Davis
Ms. Lynn Evans
Mrs. Lucy Eysenbach and family
Drs. Timothy and Marla Farrell
Mr. John Friedberg
Mr. and Mrs. James Gavigan
Ms. Brettina Healy
Ms. Margaret Hull
Mr. and Mrs. Lee Jamison
Ms. Lois Jones
Dr. William Jordan
Mr. and Mrs. Matt Levine-Mackie
Mr. and Mrs. Steven Liddic
Ms. Susan Link
Mr. and Mrs. Fred Lyon
Mrs. Nadina Mattes
Mr. and Mrs. Stephen McDonnell
Ms. Mary Ann Nichols
Ms. Priscilla Pancoast
David and Kathy Price
David and Lauren Price
Mr. and Mrs. Kenneth Rees
Mr. and Mrs. David Sanders
Mr. and Mrs. Jeff and Laurie Stephens
Mr. and Mrs. Donald Sweppenheiser
Mr. Alan Viani
Ms. Lisa Vladika
Dr. and Mrs. John Wandalowski
Mr. Arthur Watres
Atty. and Mrs. Charles Welles
Ms. Linda Woodyatt
Ms. Barbara Zeck

If you haven't yet, please join or renew your membership now. You will find a membership form on the back page of this newsletter. Your gift is what makes our work possible! Members who join or renew before press time of the next CountryViews will be acknowledged in the Fall 2006 issue.

Honors and Memorials

We offer our thanks to the following individuals who have made gifts to the Conservancy in memory of or in honor of individuals. These gifts will be placed in the Conservancy's Land Fund to support our land protection activities throughout the region.

In honor of Joan Theilgard's birthday:
Kathleen Graff

In honor of Bill and Dede Tersteeg on their 40th anniversary:
Kathleen Graff

In memory of C. Lee Havey:
Lynn Nichols

In memory of Virginia Matthews:
Lynn Nichols

In memory of Bill Merkle:
Paul and Janet Beck
Marjorie Dingee

We also extend our thanks to the following donors to the Peck Memorial Trail Fund:

In memory of Jim Peck:
Melissa and Vance Jones

In memory of Roz and Jim Peck:
Constance Denault

What better way to remember a departed friend who loved the land, or to celebrate a joyous passage in a loved one's life, than to make a gift? Through the Conservancy you can give the gift of conservation, which goes on forever.

We offer our sincere apologies for any errors or omissions in these acknowledgements. Please contact us if we have overlooked your gift or misspelled your name, and we will make it right in our next issue! We are grateful for your forbearance.

Correction

In the item "Remembering Jim Peck" in our last issue, we inadvertently omitted the maiden names of Mr. Peck's surviving sisters, both of whom generously made gifts to the Conservancy in his memory:

Mrs. Rebecca Peck Peterson
Mrs. Susanna Peck Waterman

What IS a Conservation Easement?

A "conservation easement," sometimes called a "conservation agreement," is a legal agreement between a landowner and another entity (generally a non-profit land trust, like the Countryside Conservancy, but sometimes a Government agency). The agreement permanently limits the subdivision, development and resource-extraction rights associated with the property, in order to protect the natural, agricultural, forestry, or other conservation values of the land forever. Ownership of the land itself remains with the grantor of the easement (the landowner), while the grantee (the land trust) is responsible for enforcing the easement conditions. The easement is binding upon all future owners of the land. When donated to a non-profit organization, a conservation easement may qualify as a charitable gift for a Federal income tax deduction (see story on page 4).

Conservation easements are an important tool for voluntary, private land conservation. Over 5 million acres have been protected nationwide through easements to date. The Countryside Conservancy holds easements on nearly 500 acres in Lackawanna, Wyoming and Susquehanna Counties. If you'd like to talk to the Conservancy about whether your land would be a candidate for a conservation easement, please call the office at (570) 945-6995.

"Honors and Memorials" in our last issue noted gifts in honor of Sally and Peter Bohlin and in honor of Lynn Nichols, but omitted one of the donors' names: these two gifts were given by both Rebecca Peck Peterson and Susanna Peck Waterman. We extend our sincere apologies to Mrs. Peterson and Mrs. Waterman.

Summer at Little Rocky Glen

The Conservancy extends a warm welcome to Casey Dixon and Michael Koval, our new land stewards who have been working part-time at Little Rocky Glen this summer. They've been our eyes and ears at the Glen, keeping tabs on the property, doing maintenance and clean-up, and talking with visitors. We thank Michael and Casey for their good spirits and hard work!

Casey spotted a group of kayakers coming down through the gorge during the torrential floods at the end of June. It's nice to know that somebody got some benefit out of that weather.

The Glen has been busy this summer with all sorts of visitors, including students and teachers as well as those seeking a cool spot by the creek. In May, teacher Lisa Vladika visited the Glen with 40 of her eighth-grade science students from Marian Catholic School in Scranton. Countryside Conservancy Executive Director Mary Felley introduced them to the site and its recent history, and then handed off to Professor Robert Cook of Keystone College, who took them back into deep time for a look at the geological history of the site. The kids were fascinated by everything from the fossilized sand ripples and the pothole formations to their first encounter with poison ivy!



Bob Cook introduces the Glen to Marian Catholic students.

Keystone Professors Howard Jennings, Robert Cook, and Jerry Skinner led two groups of teachers in visits to the Glen this summer, for the Keystone College Environmental Education Institute (Kceei). One group, "Watershed Explorers," introduced several dozen K-6 teachers to the basic science of watersheds and watershed management. The second group, "Geology of Northeastern Pennsylvania," was aimed at 7-12 teachers and provided an in-depth introduction to the secrets of Earth's history. The teachers in attendance were loud in their praise of the Glen and of the Kceei program. Kceei offers a wide variety of courses on environmental subjects, and allows teachers to get professional development credits while they develop new teaching tools and topics. Please visit kceei.keystone.edu to learn more.

In other news at the Glen, the barn, which was determined to be unsafe and not amenable to repair, has been demolished and cleared. The Conservancy is looking into building a new structure on the site for the use of visitors: something modest and in keeping with the beautiful natural surroundings. More news on this in a future newsletter.

Stewardship at Quarry Ridge

In early August, a group of Conservancy staff, Board members and volunteers took a walk at the Quarry Ridge Preserve with local service forester Jack Gearhart. The purpose was to identify sites for removal of invasive plant species and erection of deer exclosures. This property has its share of invasive plants, notably Japanese honeysuckle and barberry, as well as a few oddities like Amur cork-tree! Invasive plants are a concern because, once established, they tend to take over the landscape and prevent native species getting a foothold. Jack suggested various control methods for the most important invasive species. He also looked at sites for erecting simple deer exclosures, as a way to determine whether deer browsing is hindering forest plant regeneration. If, after a few years, the seedlings inside the exclosure are more abundant and diverse than those outside, it's a good indication that deer pressure is holding back forest regeneration. However, Jack was encouraged by a quick inspection of the forest floor, and speculated that deer pressure may not be as great in this area as we believed. The deer exclosures are a way of confirming this hypothesis, and once erected, they can be used as a teaching tool for local forest landowners.

Quarry Ridge Preserve is located at the southeast corner of Lackawanna State Park, and is accessible overland from Meadowsweet Preserve at Lily Lake Road. Like all Conservancy preserves, it is open to visitation from dawn to dusk for non-motorized recreation. Please call 945-6995 for directions.

Watershed Events: News from the South Branch Tunkhannock Creek Watershed Coalition

News of the Chesapeake

If you're not yet a member of the South Branch Tunkhannock Creek Watershed Coalition, then you're not in the loop! Signed-up members of the Coalition are receiving three free issues of the Bay Journal from the Alliance for the Chesapeake Bay. (Honesty compels me to add that anyone can get a free subscription to the Journal: just email subscribe.bayjournal@earthlink.net or call (717) 428-2819.) The Journal is an interesting bi-monthly update on what's happening throughout the Chesapeake Bay watershed. Remember: we all live upstream!

Meeting Update

The Watershed Coalition's July meeting focused on discussion of the massive damage caused by the floods in late June. In August, the group held a small but convivial gathering with refreshments on the deck at the Conservancy office in August. We plan to invite guest speakers to our fall and winter meetings, to present topics of interest.



We continue to watch the drawdown of Glenburn Pond, remediation efforts at Precision Plating, and other developments in our watershed with concern and interest. If you're interested, too, please join an upcoming meeting of the Watershed Coalition! All meetings are open to any interested party. The group meets on the second Tuesday of each month, at 6:30 pm at the Countryside Conservancy office at Keystone College, La Plume. We'd love to see you!

Taking the Pulse of the Creek

The Watershed Coalition continues its program of monthly water-quality testing in the South Branch of the Tunkhannock Creek. Five testing sites are now established in Tunkhannock Township, Clinton Township, Factoryville, and La Plume. The group expanded its testing program to a sixth site on Ackerly Creek this summer, and as more volunteers join, we hope to set up more sites further upstream.

The group has collected over two years of data at the original five sites. Members of the public can view these data online at <http://www.pawatershedsdatasystem.psu.edu/>. Simply register as a new user, select the South Branch Tunkhannock Creek Watershed Coalition from the "subscription" list, and file a request to view data. This website, with extensive mapping and graphing functions, is worth exploring. Our thanks to the Pennsylvania Organization of Watersheds and Rivers (POWR) for creating the website, and to Angie McCracken and Ellie Hyde for entering the South Branch data for us!

Finally, the Coalition will conduct its twice-yearly monitoring of stream macroinvertebrates (a.k.a. "bugs") on Saturday, October 28. If you're curious about caddisflies, wondering about water pennies, or hooked on hellgrammites, come join us and learn more! Newcomers are always welcome. Please contact Water Quality Chair Jeff Aronsohn at cyberknight@epix.net to get involved.

Massage Offer Continues

The special massage offer at Birchwood Fitness in Clarks Summit continues! 10% of all proceeds from each massage are directed to the Countryside Conservancy or one of four other local non-profit organizations. You decide where you want your donation to go.

Offerings include a regular one-hour massage session for \$60, or an extended 90-minute session for \$75. Enjoy Swedish, sports, deep-tissue and even hot stone massage therapy in Birchwood's clean and comfortable surroundings! Your massage also entitles you to use the Birchwood fitness center for the day, with its wide variety of life fitness equipment, free weights and steam rooms.

Gift certificates are also available and are suitable for any occasion. Call Dave at (570) 335-2283 to make your appointment. Birchwood Fitness is located at 105 Edella Road in Clarks Summit. Our sincere thanks to Birchwood Fitness and to long-time Conservancy member and supporter Dave Jennings for creating this special opportunity.

More Ways to Give

Do you own stock that has greatly increased in value since you acquired it? You may want to consider turning it into a charitable gift. By making a gift of the appreciated stock rather than selling it, you can avoid a sometimes considerable tax on capital gains (for stocks held "long-term," or more than a year and a day). You can also take an income tax deduction for the charitable gift based on the stock's fair market value.

The Conservancy is able to accept gifts of stock. Take a look into your portfolio, talk to your accountant, and see if a gift of stock is right for you!

**Join Countryside Conservancy's efforts to preserve the fragile natural beauty of our area.
The future depends on us. Please join us today.**

_____ Family \$35 _____ Friend \$70 _____ Founder \$100
 _____ Patron \$250 _____ Benefactor \$500 _____ Trust Partner \$1,000 and up

Please tear off and remit with your check or VISA/MC charge to Countryside Conservancy, PO Box 55, La Plume, PA 18440.

NAME: _____
 ADDRESS: _____
 VISA/MC: _____ EXP.: _____
 PHONE: _____
 SIGNATURE: _____

Consider a gift to the Countryside Conservancy in honor of someone you care about. The gift of conservation will last forever.
 For more information contact Mary Felley at P.O. Box 55, La Plume PA 18440. (570) 945-6995 or cconserv@epix.net

Countryside Conservancy Board of Directors

Patricia Acker	Penny Davis	Lisa Hall
Dorrance Belin	Susan Scranton Dawson	Margaret Hull
William Booth	Teri Erickson	Howard Jennings
Sandra Boyle	L.P. Frieder, III	Michael T. Kane
Harmar Brereton	George Ginader	Malcolm MacGregor
Amy T. Broadbent	Kathleen C. Graff	Jeff Mitchell
Lydia Coulter	Commander Jo-Ellen Greene	Russell D. Shurtleff

Countryside Conservancy is a tax-exempt organization as provided by IRS regulations. A copy of the official registration and financial information may be obtained by calling toll free, within Pennsylvania.

1-800-732-0999

Registration does not imply endorsement.

Printed on recycled paper.

NON-PROFIT ORG.
 U.S. POSTAGE
 PAID
 PERMIT NO. 5
 LA PLUME PA 18440

ADDRESS SERVICE REQUESTED

Countryside Conservancy
 P.O. Box 55
 La Plume, PA 18440

